



COMPUTER SETUP INSTRUCTIONS

Whether you are upgrading or replacing your current dedicated panoramic x-ray machine computer; please follow these steps to ensure a successful transition to your new computer.

Panoramic Technical Support can be reached at 800-654-2027 / support@pancorp.com for any questions.

DENTAL IMAGING SOFTWARE

Computer & Software Setup Instructions

for a computer with Windows 10 Professional 64-bit

Used with X-ray Machines:



Encompass Pan or Pan/Ceph

2nd Generation

Serial Numbers K001xxx

3rd, and 4th Generations

Serial Numbers 500000xxxxxx

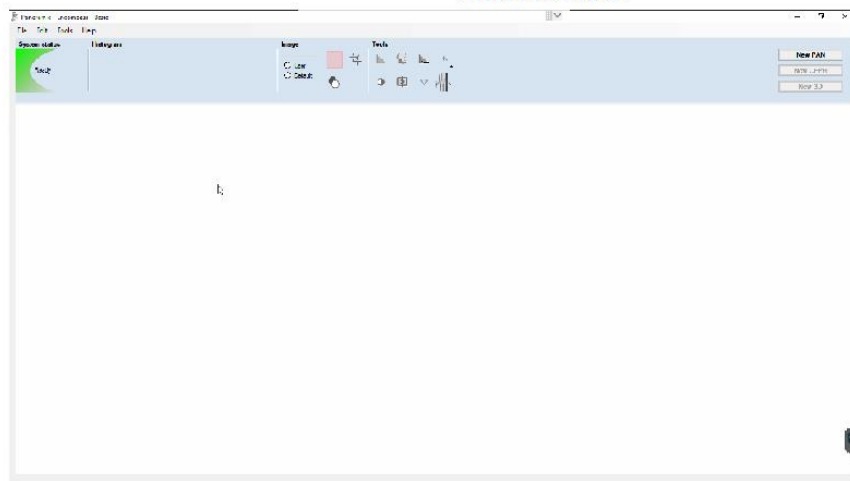


EXAMPLE

Serial Number found on the back of the X-ray Tube on the rotation arm



Dental Imaging Software
App





Pre-Setup – from the existing computer

Backup Calibration Files

Identify capture card

Computer Information

Setup – on the new computer

Verify Computer Operating System & Type

Disable Sleep, Hibernate, & Fast Startup

Install Software – Dental Imaging Software

Configure capture card

Verify or Configure Software Settings– Dental Imaging Software

Restore Calibration Files

BACKUP CALIBRATION FILES

On the existing computer, backup or copy the **Dental Imaging Software** root folder.

Required -- C:\Dental Imaging Software\

IDENTIFY CAPTURE CARD



Type	Intel CT Desktop Adaptor
Expansion Slot	PCI Express x1 or x16
Size	Full or Half Height - call to order different size bracket
Compatible Operating Systems	Windows 7 Pro 32/64 bit Windows 10 Pro 32-bit NOT SUPPORTED Windows 10 Pro 64-bit Only
Used with Pano Machines	PC-1000 Digital PC-4000 Encompass HF-100 Eagle (2D & 3D CBCT) Envision P / Envision C1

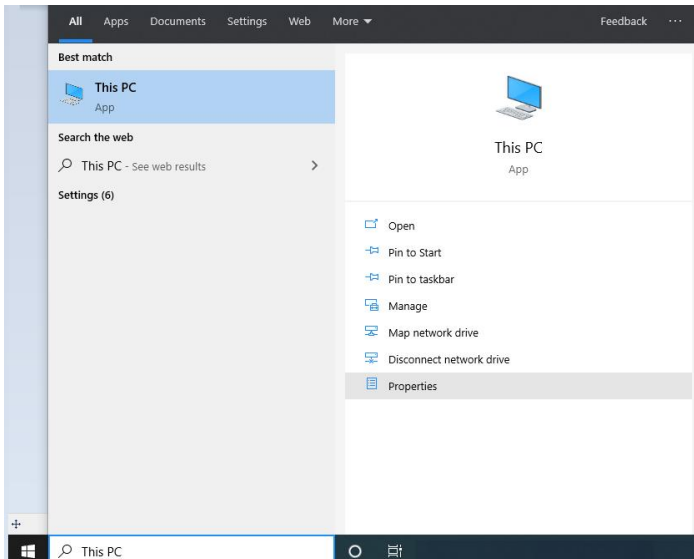
COMPUTER INFORMATION

The PC used must be a Windows desktop tower. Mac computers & Mac OS not supported. Laptops & All-in-One computers will not work because the capture card must be installed in the next computer.

Processor (Intel Brand Required)	i5 6th Generation or later
RAM	8 GB
Hard Drive	500+ GB or greater, 7200 RPM or faster
One Available Expansion slot	PCI-Express x16

VERIFY COMPUTER OPERATING SYSTEM & TYPE

From the Start Menu, type “This PC” and click on Properties



An Example is shown. Windows 10 Professional, 64-bit Operating System

Control Panel Home

- Device Manager
- Remote settings
- System protection
- Advanced system settings

[View basic information about your computer](#)





Windows edition

Windows 10 Pro for Workstations

© 2019 Microsoft Corporation. All rights reserved.

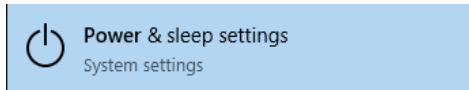
System

Manufacturer:	Dell
Model:	Latitude 5480
Processor:	Intel(R) Core(TM) i5-6440HQ CPU @ 2.60GHz 2.60 GHz
Installed memory (RAM):	16.0 GB (15.6 GB usable)
System type:	64-bit Operating System, x64-based processor
Pen and Touch:	No Pen or Touch Input is available for this Display

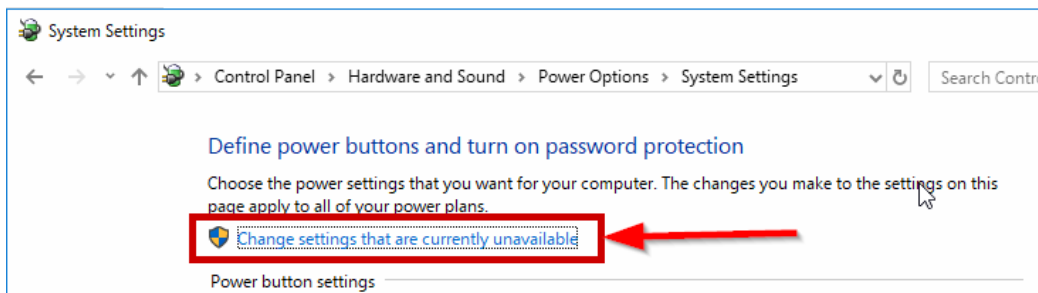





DISABLE SLEEP, HIBERNATE, & FAST STARTUP

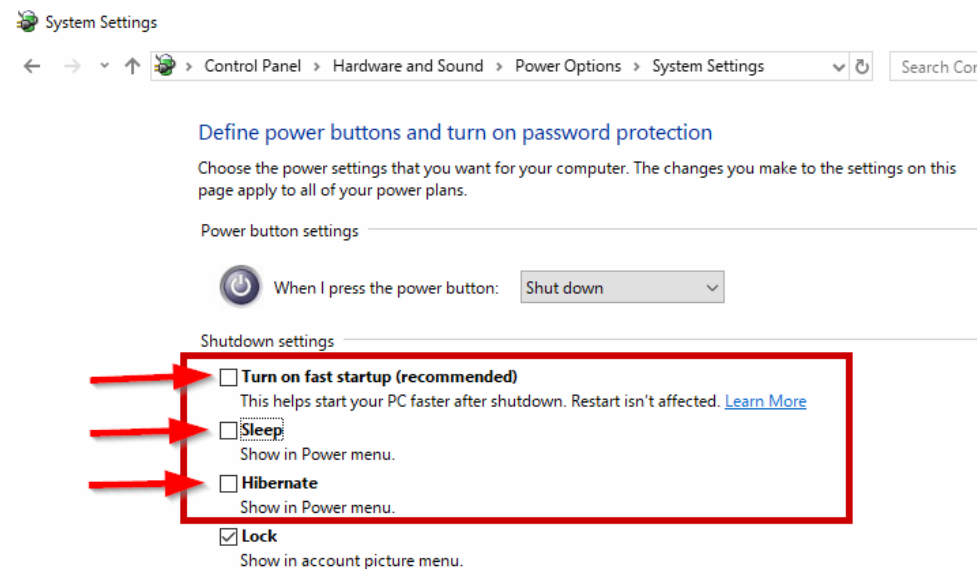
- a. If PC is windows 10, open the start menu and type “power” click on the “Power and sleep settings”.



- b. On the right side of the window, under Related settings, click “Additional power settings”.
- c. On the left side of the window, click “Choose what the power buttons do”.
- d. Near the top of the window click “Change settings that are currently unavailable”.



- e. Uncheck the boxes.



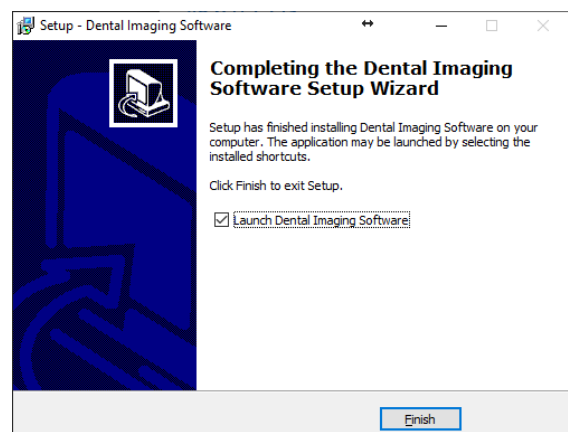
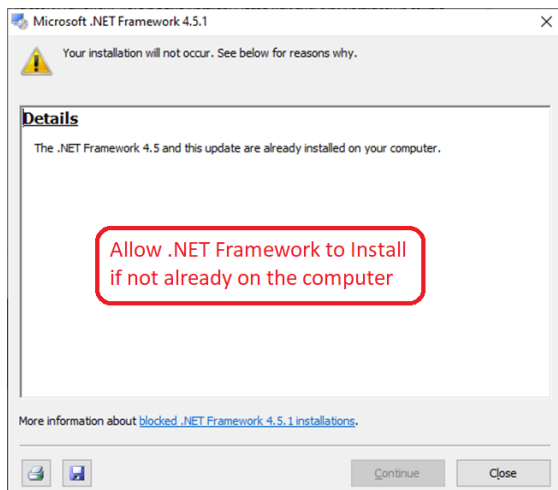
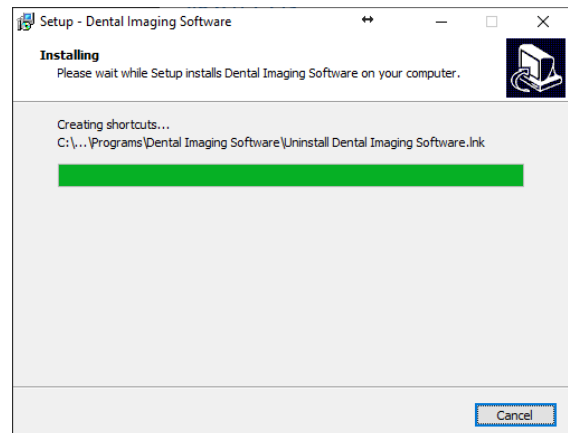
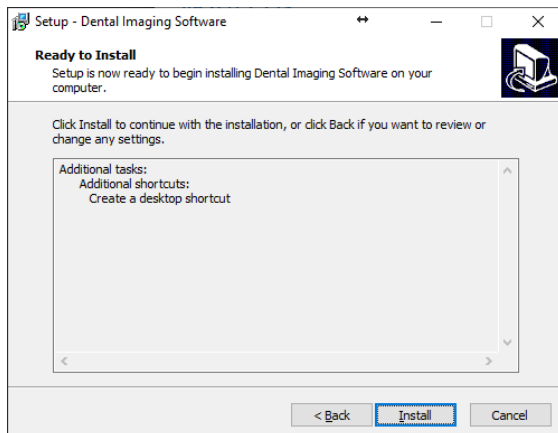
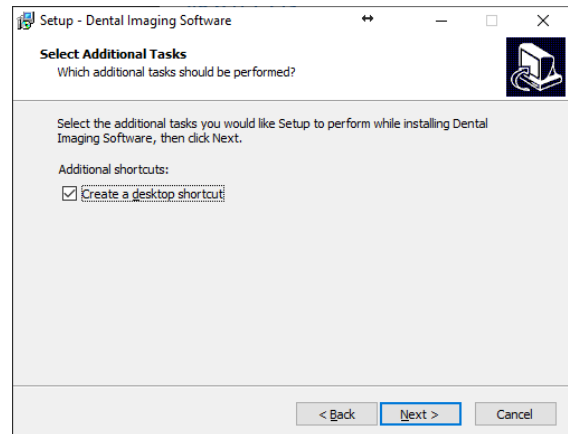
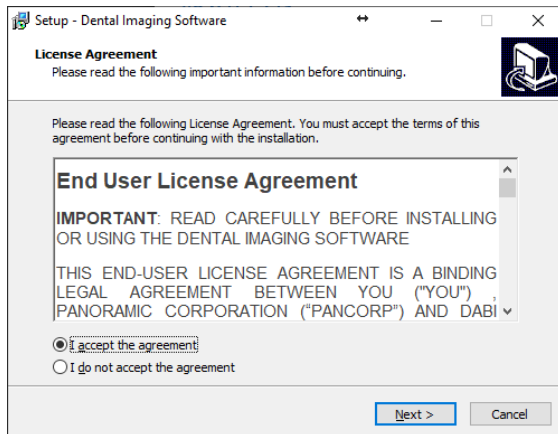


INSTALL SOFTWARE - DENTAL IMAGING SOFTWARE


Note: If previously installed, or if this is an upgrade from Windows 7, make sure to uninstall any previous versions

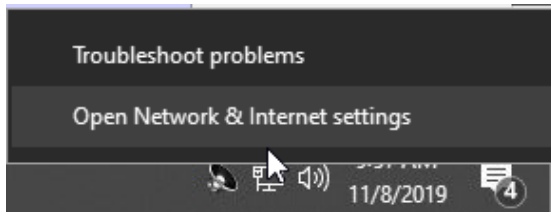
Click, Download, and Run the software Installation. [Dental Imaging Software](#) (approx. file size 87 MB)

Use the Default selections by clicking the Next buttons. Here are the screens to show the prompts.

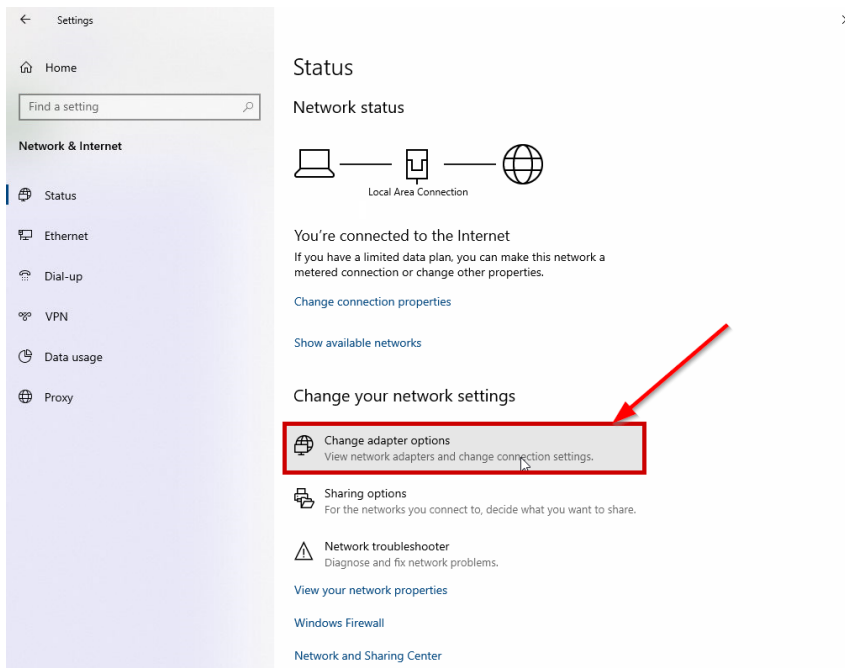


INTEL NIC, CONFIGURE & INSTALL PROTOCOL

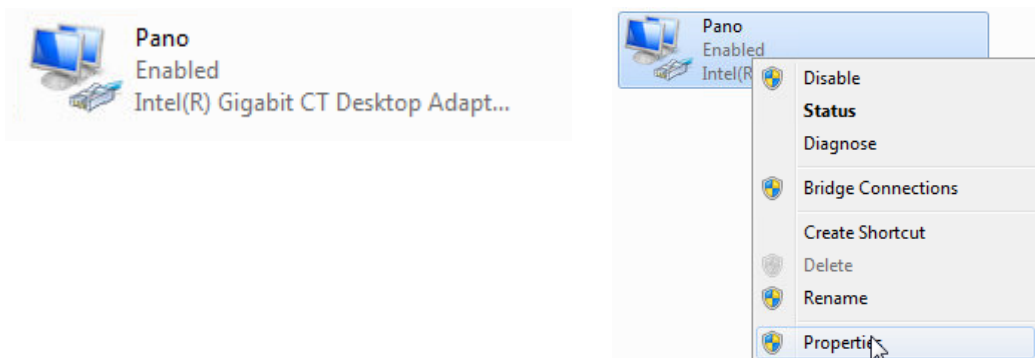
- a. Right-click on the network icon  next to the clock on your taskbar and click “open Network & internet settings”.



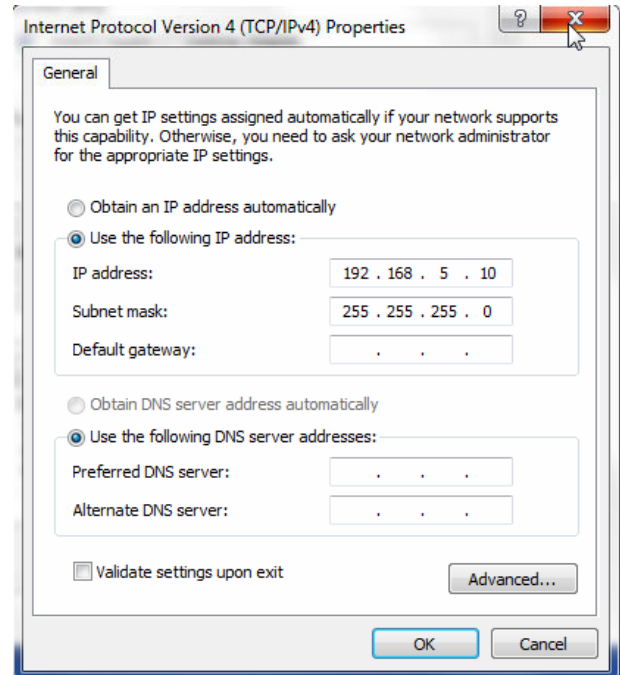
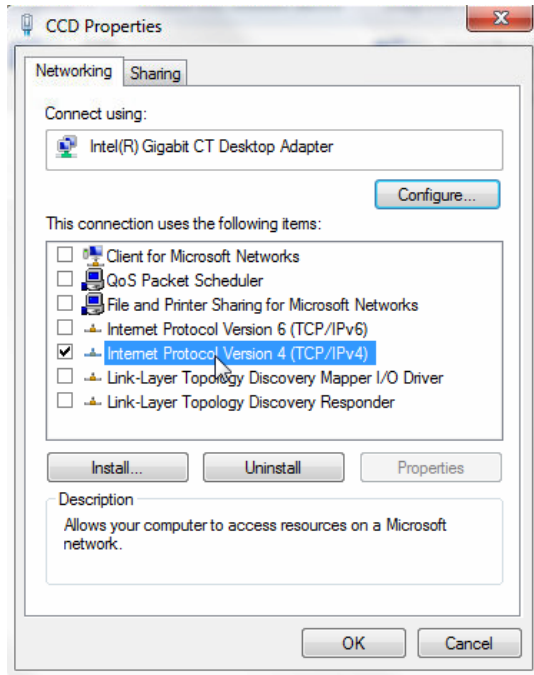
- b. Click on “change adapter options”.



- c. Right-click on the “Intel gigabit CT desktop adapter” and chose “properties”.



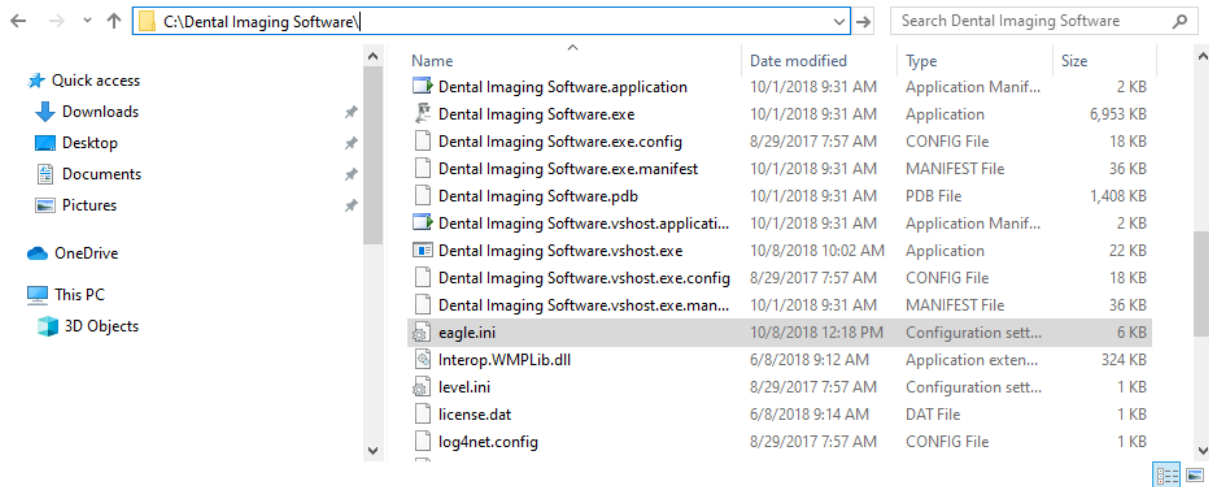
- d. Uncheck ALL items/protocols for the network adapter, except Internet Protocol Version 4.
- e. Double-Click IPv4 (Properties) and set the IP address to 192.168.5.10, and click OK.
- f. Click OK on the Interface Properties to Save the IP address.



- g. Right click on the Intel CT Desktop adapter again and go into the properties, and click the “configure” button in the top right corner.
- h. Under the “Power Management” tab, uncheck all boxes.
- i. Under the “advanced” tab change the “Receive buffers” to a value of “2048”.
If Receive buffers is not found, it might be found under Performance Options
- j. Click “OK” to save your changes.

VERIFY OR CONFIGURE THE DENTAL IMAGING SOFTWARE

1. Browse to, and open the eagle.ini configuration file. The default application is to use Notepad.
C:\Dental Imaging Software\eagle.ini



2. The first configuration is your Sensor's IP address. This is a **CRITICAL STEP**.
3. Overwrite and correct the IP address settings BASED ON WHAT TYPE OF SETUP YOU HAVE

```
eagle.ini - Notepad
File Edit Format View Help

[SENSORS_IP_CONFIG]
PANSnapSensor=192.168.5.100
CEPHSensor=192.168.5.101
CEPHSensorType=0
```

Pan Only
1 sensor

```
eagle.ini - Notepad
File Edit Format View Help

[SENSORS_IP_CONFIG]
PANSnapSensor=192.168.5.101
CEPHSensor=192.168.5.101
CEPHSensorType=1
```

Pan / Ceph
1 sensor

```
eagle.ini - Notepad
File Edit Format View Help

[SENSORS_IP_CONFIG]
PANSnapSensor=192.168.5.100
CEPHSensor=192.168.5.101
CEPHSensorType=2
```

Pan / Ceph
2 sensors

- If you wish to save the image or bridge via TWAIN with other programs, find the [SOFTWARE_CONFIG] section and change the License values. Basic should be False and Advanced should be True.

eagle.ini - Notepad

File Edit Format View Help

```
[SOFTWARE_CONFIG]
Language=0
Company=1
PatientFilesFolderPANCEPH=C:\Dental Imaging Software\Patient Images
PatientFilesFolderCBCT=C:\Dental Imaging Software\Patient Images
PANAUTO_L=True
AutoPatientIDName=False
PatientFolderMaxSize=500000000
AutoTemperatureCalibrationPAN=False
AutoTemperatureCalibrationCEPH=True
BasicLicense=False
AdvancedLicense=True
UpgradeRequired=True
SaveImageDefaultExt=tiff
InsertNameFontSize=0
InsertR_LFontSize=0
InsertNamePosition=1
EnableQA=False
```

- Sensor Firmware Config (for 2 sensor units only)

If The machine serial number starts with a 'K', then leave the default firmware value as **True**


eagle.ini - Notepad

File Edit Format View Help

```
;ToothSystem values: 0 (FDI), 1 (Universal) or 2 (Palmer)
ToothSystem=1

; TwoCCDSensorsOldFirmware = True if configured as two sensors (dedicated) CCD, and they are NOT turn on simultaneously.
TwoCCDSensorsOldFirmware=True

AutoCalibThreshold=12
```



If the machine serial number starts with a '500000', then change the firmware value to **False**


*eagle.ini - Notepad

File Edit Format View Help

```
;ToothSystem values: 0 (FDI), 1 (Universal) or 2 (Palmer)
ToothSystem=1

; TwoCCDSensorsOldFirmware = True if configured as two sensors (dedicated) CCD, and they are NOT turn on simultaneously.
TwoCCDSensorsOldFirmware=False

AutoCalibThreshold=12
PanCephThreshold=2000
```

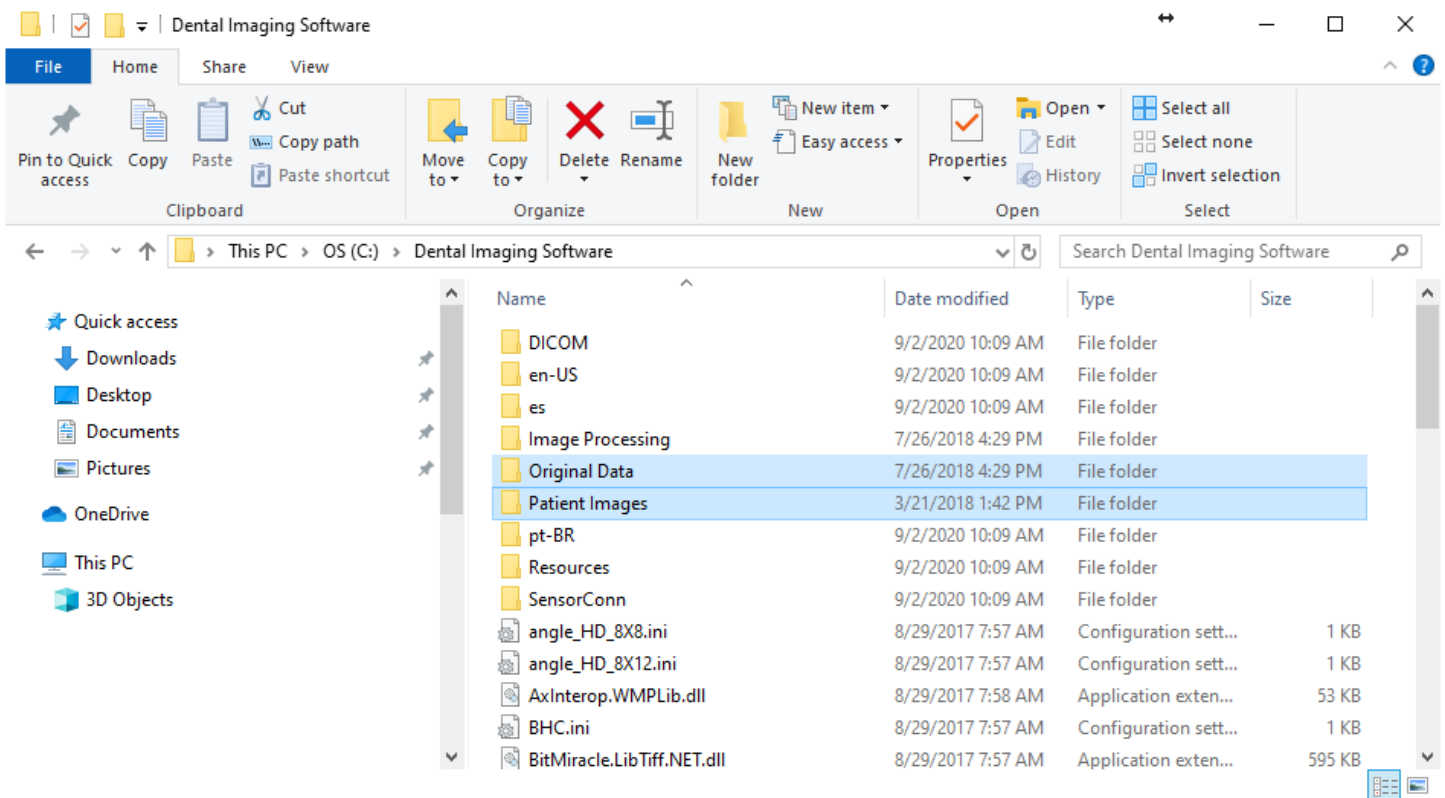


- Save changes made to the eagle.ini file and close the file/notepad application.

RESTORE THE CALIBRATION FILES

The calibration files should have been backed up from the previous computer. Copy ONLY 2 folders within to the same location on the new computer.

C:\Dental Imaging Software\Original Data\
C:\Dental Imaging Software\Patient Images\



Open the Dental Imaging Software and Verify the Green connection in the TOP LEFT.

Also verify the New PAN / New CEPH buttons in the TOP RIGHT when the machine is setup respectively.

